

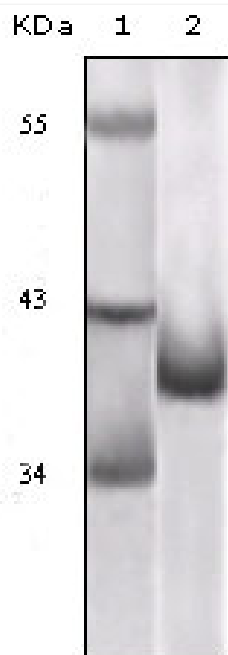


p16 Monoclonal Antibody

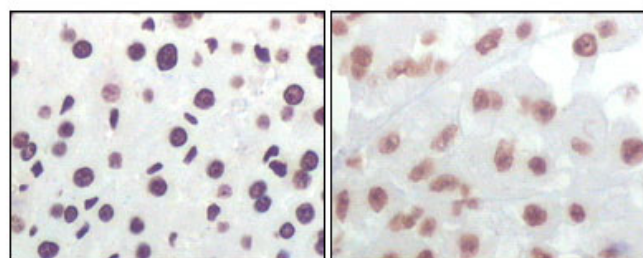
Catalog No	YP-Ab-16561
Isotype	IgG
Reactivity	Human;Mouse;Rat
Applications	WB;IHC;IF;ELISA
Gene Name	CDKN2A
Protein Name	Cyclin-dependent kinase inhibitor 2A isoform 4
Immunogen	Purified recombinant fragment of p16 expressed in E. Coli.
Specificity	p16 Monoclonal Antibody detects endogenous levels of p16 protein.
Formulation	Ascitic fluid containing 0.03% sodium azide,0.5% BSA, 50%glycerol.
Source	Monoclonal, Mouse
Purification	Affinity purification
Dilution	WB: 1/500 - 1/2000. IHC: 1/200 - 1/1000. ELISA: 1/10000.. IF 1:50-200
Concentration	1 mg/ml
Purity	≥90%
Storage Stability	-20°C/1 year
Synonyms	CDKN2A; CDKN2; MLM; Cyclin-dependent kinase inhibitor 2A; isoform 4; p14ARF; p19ARF
Observed Band	
Cell Pathway	Nucleus, nucleolus . Nucleus, nucleoplasm .; [Isoform smARF]: Mitochondrion .
Tissue Specificity	
Function	
Background	
matters needing attention	Avoid repeated freezing and thawing!
Usage suggestions	This product can be used in immunological reaction related experiments. For more information, please consult technical personnel.



Products Images

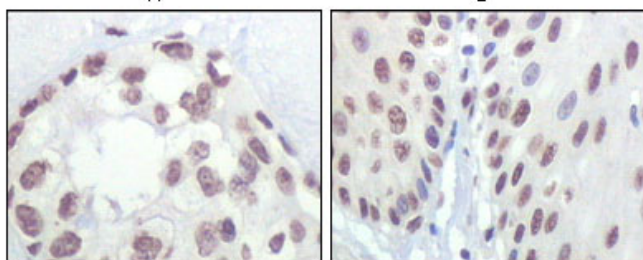


Western Blot analysis using p16 Monoclonal Antibody against truncated p16 recombinant protein.



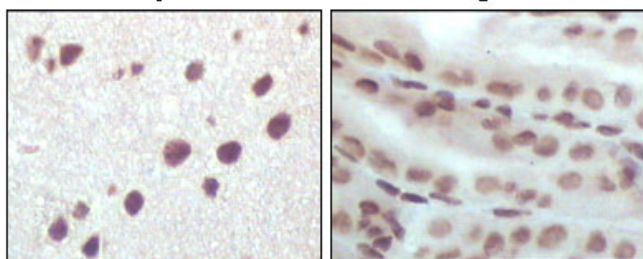
A

B



C

D



E

F

Immunohistochemistry analysis of paraffin-embedded rat liver tissue (A), human brain tumor (B), breast cancer (C), esophageal epithelium tissue (D), mouse brain tissue (E) and stomach tissue (F), showing nuclear localization with DAB staining using p16 Mon